

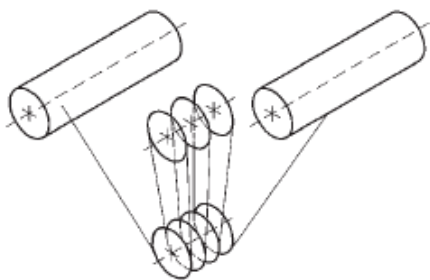
# ABUS wire rope hoist selection table

ABUS wire rope hoist selection table for twin barrel crab units, type Z / type ZB										
SWL kg	Reeving 8/2 (6/2); [10/2]; 12/2					Reeving 4/2				
	Type	FEM	ISO	Hook path m	$V_{hoist}$ m/min	Type	FEM	ISO	Hook path m	$V_{hoist}$ m/min
8 000						GM 5080 GM 5080	3m 4m	M6 M7	12; 20; 30; 37 12; 20; 30; 37	16/2.6 16/2.6; 12.5/2; 10/1.6; 8/1.3
10 000						GM 5100 GM 6100 GM 6100	3m 3m 4m	M6 M6 M7	12; 20; 30; 37 12; 20; 30; 37 12; 20; 30; 37	16/2.6; 12.5/2; 10/1.6; 8/1.3 16/2.6 12.5/2; 10/1.6; 8/1.3
12 500						GM 5125 GM 5125 GM 6125 GM 6125	2m 3m 2m 3m	M5 M6 M5 M6	12; 20; 30; 37 12; 20; 30; 37 12; 20; 30; 37 12; 20; 30; 37	16/2.6 12.5/2; 10/1.6; 8/1.3 16/2.6 12.5/2; 10/1.6; 8/1.3
16 000	GM 5160 GM 5160	3m 4m	M6 M7	6; 10; 15; 18.5 6; 10; 15; 18.5	8/1.3 8/1.3; 6.3/1; 5/0.8; 4/0.66	GM 5160 GM 6160 GM 6160 GM 7160	2m 2m 3m 4m	M5 M5 M6 M7	12; 20; 30; 37 12; 20; 30; 37 12; 20; 30; 37 16; 30; 45	12.5/2; 10/1.6; 8/1.3 12.5/2 10/1.6; 8/1.3 16/2.6; 12.5/2; 10/1.6; 8/1.3
20 000	GM 5200 GM 6200 GM 6200	3m 3m 4m	M6 M6 M7	6; 10; 15; 18.5 6; 10; 15; 18.5 6; 10; 15; 18.5	8/1.3; 6.3/1; 5/0.8; 4/0.66 8/1.3 6.3/1; 5/0.8; 4/0.66	GM 5200 GM 6200 GM 7200 GM 7200	1Am 2m 2m 3m	M4 M5 M5 M6	12; 20; 30; 37 12; 20; 30; 37 16; 30; 45 16; 30; 45	10/1.6; 8/1.3 10/1.6; 8/1.3 16/2.6 16/2.6; 12.5/2; 10/1.6; 8/1.3
25 000	GM 5250 GM 5250 GM 6250 GM 6250 (GM 7250)	2m 3m 2m 3m 4m	M5 M6 M5 M6 M7	6; 10; 15; 18.5 6; 10; 15; 18.5 6; 10; 15; 18.5 6; 10; 15; 18.5 10.6; 20; 30; 36	8/1.3 6.3/1; 5/0.8; 4/0.66 8/1.3 6.3/1; 5/0.8; 4/0.66 10.4/1.6; 8.2/1.2; 6.6/1; 5.2/0.8	GM 6250 GM 7250 GM 7250	1Am 2m 3m	M4 M5 M6	12; 20; 30; 37 16; 30; 45 16; 30; 45	8/1.3 16/2.6; 12.5/2 12.5/2; 10/1.6; 8/1.3
32 000	GM 5320 GM 6320 GM 6320 (GM 7320) (GM 7320) GM 7320	2m 2m 3m 2m 3m 4m	M5 M5 M6 M5 M6 M7	6; 10; 15; 18.5 6; 10; 15; 18.5 6; 10; 15; 18.5 10.6; 20; 30; 36 10.6; 20; 30; 36 8; 15; 22.5; 27.5	6.3/1; 5/0.8; 4/0.66 6.3/1 5/0.8; 4/0.66 10.4/1.6 10.4/1.6; 8.2/1.2; 6.6/1; 5.2/0.8 8/1.3; 6.3/1; 5/0.8; 4/0.66	GM 7320	2m	M5	16; 30; 45	12.5/2; 10/1.6; 8/1.3
40 000	GM 5400 GM 6400 (GM 7400) (GM 7400) GM 7400 GM 7400	1Am 2m 2m 3m 2m 3m	M4 M5 M5 M6 M5 M6	6; 10; 15; 18.5 6; 10; 15; 18.5 10.6; 20; 30; 36 10.6; 20; 30; 36 8; 15; 22.5; 27.5 8; 15; 22.5; 27.5	5/0.8; 4/0.66 5/0.8; 4/0.66 10.4/1.6; 8.2/1.2 8.2/1.2; 6.6/1; 5.2/0.8 8/1.3 8/1.3; 6.3/1; 5/0.8; 4/0.66	GM 7400	1Am	M4	16; 30; 45	10/1.6; 8/1.3
50 000	GM 6500 (GM 7500) GM 7500 GM 7500	1Am 2m 2m 3m	M4 M5 M5 M6	6; 10; 15; 18.5 10.6; 20; 30; 36 8; 15; 22.5; 27.5 8; 15; 22.5; 27.5	4/0.66 8.2/1.2; 6.6/1; 5.2/0.8 8/1.3; 6.3/1 6.3/1; 5/0.8; 4/0.66					
63 000	(GM 7630) GM 7630 [GM 7630] [GM 7630]	1Am 2m 2m 3m	M4 M5 M5 M6	10.6; 20; 30; 36 8; 15; 22.5; 27.5 12; 18; 22 12; 18; 22	6.6/1; 5.2/0.8 6.3/1; 5/0.8; 4/0.66 6.3/1 5/0.8; 4/0.66; 3.2/0.5					
80 000	GM 7800 [GM 7800]	1Am 2m	M4 M5	8; 15; 22.5; 27.5 12; 18; 22	5/0.8; 4/0.66 5/0.8; 4/0.66; 3.2/0.5					
100 000	[GM 71000]	1Am	M4	12; 18; 22	4/0.66; 3.2/0.5					
120 000	GM 71200	1Bm	M3	15	3.3/0.5; 2.7/0.4					

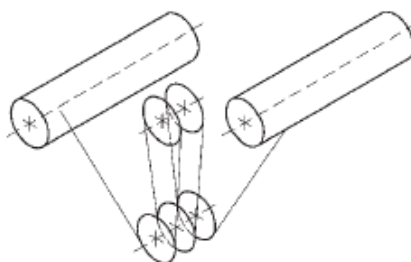
Data for type ZA available on application

All data may be subject to changes in technical specifications

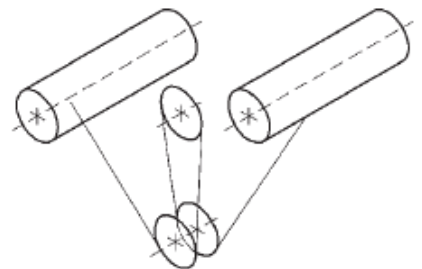
Type 8/2 - Z



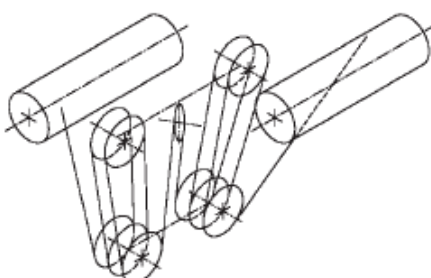
Type 6/2 - Z



Type 4/2 - Z



Type 12/2 - Z



Type 10/2 - Z

